

# Altın Elek

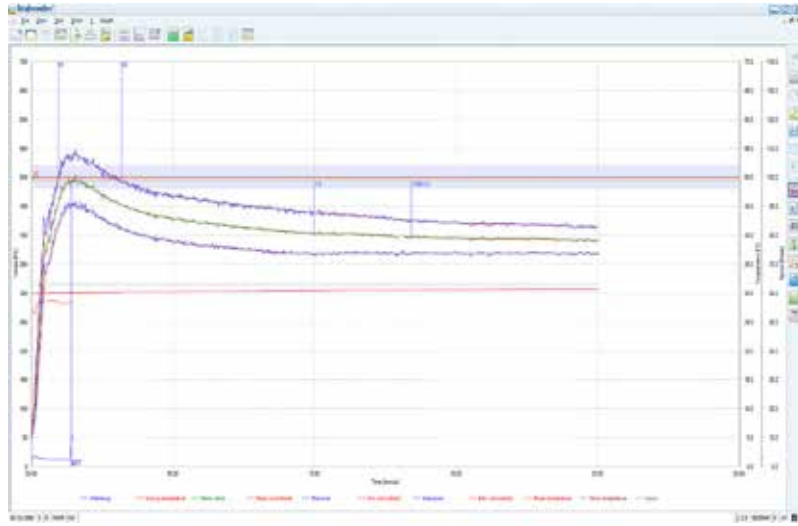
## Pastalık - Kurabiyelik

"İrmiksi" yapılı, çok düşük küllü, parlak; kısaca "ekstra" bir imalattır. Ev tipi hamur işlerinde, pasta, börek, poğaç, kurabiye yapımına uygun; rengi, kabuk ve gözenek yapısıyla ev hanımlarının beğenisini kazanmış bir üründür.

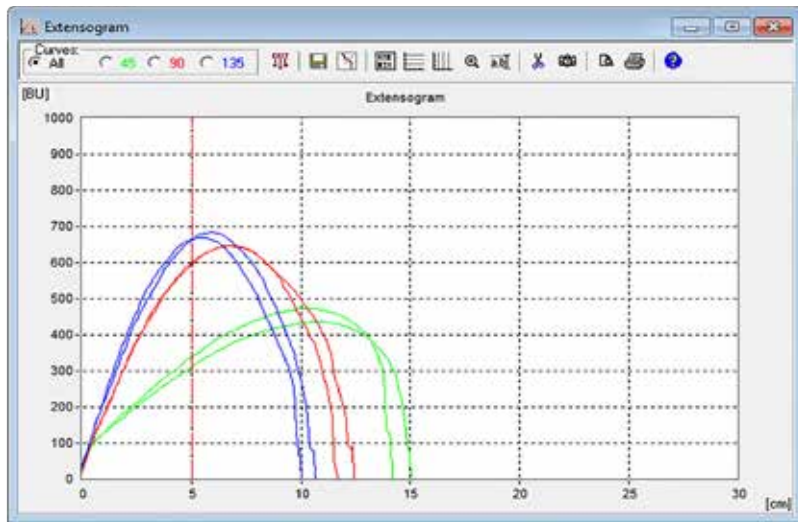


### DEĞERLER

Nem (Maks.)	14,5 (%)	FFN	140
Gluten	27	N. Zede.	24,0
G. İndeks	97	Beyazlık	68
Sedim	40	Kül (Maks.)	0,50
B. Sedim	55	Protein (Min.)	10,5 (%)



Point	Unit	Value	Description
T	mm:ss	20:01	Measuring time
DT	°C	28.4	Dosing temperature
DDT	mm:ss	01:24	Development time
C	FE	495	Consistency
WZ	%	58.5	Water absorption
WAC	%	58.4	Water absorption corr. for default consistency
WAM	%	59.0	Water absorption corr. for default moisture content
S	mm:ss	02:14	Stability
DS	FE	92	Degree of softening (10 min after beginning)
DS(ICC)	FE	98	Degree of softening (ICC / 12 min after max.)
FQN	mm	27	Farinograph quality number



Evaluation		Evaluation of sample: ALTINELEK		
		Date:	2016	Operator:
		Test after	45/90/135	Minutes
		Waterabsorption:	56 %	
<b>Proving Time [min]</b>		<b>45</b>	<b>90</b>	<b>135</b>
Energy (cm <sup>2</sup> ):		86	97	86
Resistance to Extension [BU]:		326	599	664
Extensibility (mm):		146	121	103
Maximum [BU]:		455	647	676
Ratio Number:		2.2	5.0	6.4
Ratio Number (Max.):		3.1	5.4	6.5
	<b>Total</b>	<b>45</b>	<b>90</b>	<b>135</b>
Remarks:	KOZLU GIDA A.Ş			